

EUROPE'S LARGEST SELECTION OF TEST & MEASUREMENT EQUIPMENT FOR HIRE

INLEC.COM

DATA-SHEET



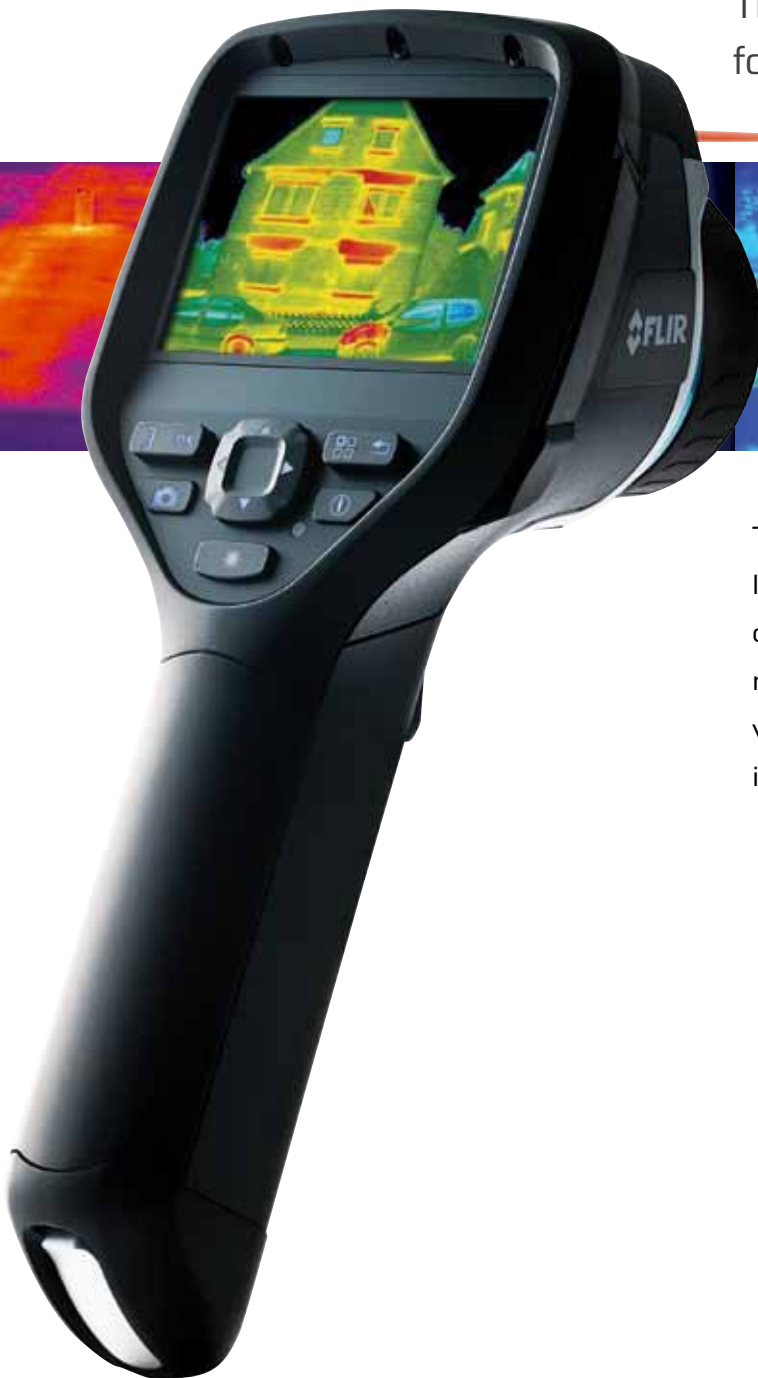
Nationwide Low Call
0333 6000 600

WHY BUY
WHEN YOU CAN HIRE










FLIR Ebx-Series

Thermal imaging cameras
for building inspections



The FLIR Ebx-Series are small and lightweight thermal imaging cameras designed for those needing higher resolution and more features and for whom documentation of findings are important.

-  Up to 320x240 pixels
-  High quality visual camera
-  LCD touch screen
-  Built-in LED light
-  Laser Pointer
-  MeterLink™
-  Dew point/Insulation Alarm

FLIR Ebx-Series

Lightweight design
Heavyweight performers

The FLIR Ebx-models have an image quality of up to 320 x 240 pixels and include the features you need to make well informed building decisions like built-in insulation and dew point alarms. The cameras are specifically designed for building inspections such as, HVAC heating and cooling issues, air flow, moisture detection, insulation problems, and much more.



What is MeterLink™?

FLIR MeterLink technology simplifies the work in building inspections by making it possible to transfer, via Bluetooth, the data acquired by a multi function moisture meter into the thermal imaging camera. The MeterLink technology saves time and eliminates the risk of erroneous records or notes.

In building related inspections of water intrusion or tracking of moisture, readings from a MeterLink Extech moisture meter are displayed in the FLIR camera.



Large and bright LCD

Sharp thermal images and easy-to-read temperature values are presented on the touch screen LCD display.



Laserpointer and LED light

Activate the built in laser pointer and associate the hot spot you see on the LCD with the real target in the field. A LED light assures clear visual images.



Easy-to-use

The Ebx-Series is equipped with an LCD touch screen that allows control of all functions. Easy accessible control buttons are also available.



Wifi

Transfer images wirelessly to a smart phone or tablet PC.



Thermal Fusion

Merges visual and infrared images to offer better analysis.



Picture-in-Picture (PiP)

With the Picture-in-Picture function it is easy to locate and highlight areas of interest.



Instant reports

Create instant reports directly in camera. Easy to copy reports to USB.



Text and voice annotations

Text comments can be made from a pre-defined list or by using the touch screen. A headset can be connected to make voice annotations.



Visual camera

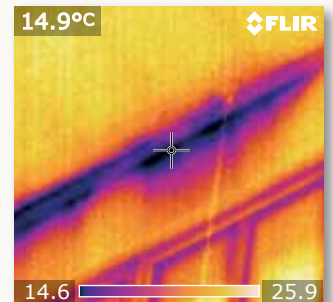
3 Megapixel visible light camera makes observing and inspecting faster and easier.



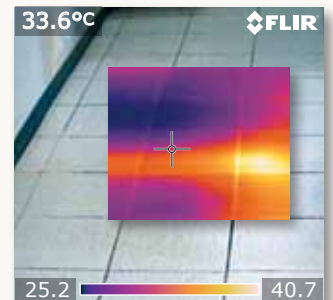
Dew point/Insulation Alarm

The Relative Humidity Alarm alerts you to the areas where there is a risk of condensation. An Insulation Alarm shows the insulation performance of the building structure.

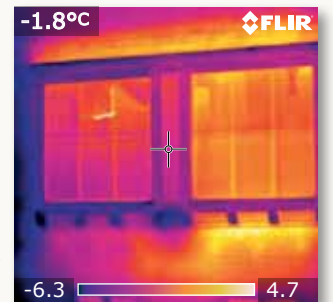
** Features dependant on camera model, please check technical specifications for more details.*



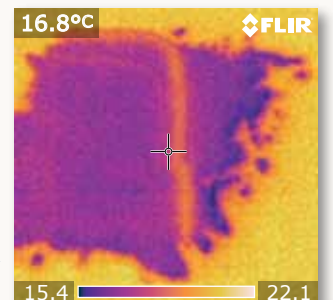
The thermal image shows a badly sealed ceiling causing cold air to leak into the building.



Thanks to the Picture-in-Picture function in the FLIR Ebx-Series it is easy to locate hidden problems. You can measure the surface temperature, find faults and document your findings.



The occupant complained about a cold spot in his living room. The thermogram on the right clearly identifies the source of the cold as an uninsulated part in the wall. By insulating this spot, the occupant improved comfort, saved energy and money.



The thermal image clearly shows moisture in a floor. Something which can not be detected by the naked eye.

INLEC, supporting you to deliver a world class service, every day, in every sector ...



OUR COMMITMENT TO YOU

A wealth of knowledge and experience.

You can take advantage of expert advice to ensure you get the best, most appropriate and cost effective equipment for the job. We supply a wide variety of industries, so if there is another way to do the job or save you time and money we'll pass on the benefit of our experience for free.

Honest advice, just a phone call away.

If we don't have a particular item, rather than hiring you something that won't do the job, we would rather direct you to an alternative supplier. You will always be provided with full instructions and if you still need help, call our technical team on Nationwide Low Call 0333 6000 600. Our aim is to save you time, frustration and money.

Top quality equipment from major manufacturers.

With Inlec you'll get the most accurate, reliable and well-maintained equipment available. Prices are regularly reviewed to ensure you always enjoy the best value for money. We have made a significant investment in test equipment so we ensure that it's well packed to minimise damage and delay.

We really do listen to you.

You won't waste your time contacting Inlec. Every request for equipment is logged and carefully considered. Listening to our customers helps keep our product range up to date and relevant. If you are unhappy about any aspect of our service please let us know so we can put it right.

YOUR 5 WAY GUARANTEE

1 GUARANTEE SAME DAY DESPATCH

We understand why prompt delivery is important to you. So, if we confirm your order before 3pm, you are guaranteed same day despatch.

2 OUR PRICE GUARANTEE

Inlec guarantee you real value for money. Our price match policy is simple - if you can hire the same product for less elsewhere, we guarantee to match that price and reduce it by a further 10% of the difference - and still deliver our industry leading technical and customer support.

For full details check our price-match guarantee online

3 TOP QUALITY GUARANTEED

All equipment is thoroughly checked prior to dispatch to ensure you receive it in full, safe working order. Your shipment will be securely packed and include manufacturer's instructions, accessories or consumables and a valid calibration certificate where appropriate. In addition, Inlec offer a 24 hour replacement service if you decide the equipment is not suitable for your application*.

4 FRIENDLY, KNOWLEDGEABLE ADVICE GUARANTEED

Inlec are happy to provide you with free advice, from an unbeatable team of experienced, knowledgeable and friendly engineers and hire experts.

5 YOUR GUARANTEE OF THE BEST CUSTOMER SERVICE

Throughout your hire we will work hard to ensure you enjoy the very best in support and service from Inlec. We guarantee you won't find better service anywhere in the industry.

*subject to availability and conditions

Europe's leading Test Equipment Hire Specialist



LAB NO. 0535



Nationwide Low Call 0333 6000 600

Online: www.inlec.com

Inlec UK Ellerbeck Way, Stokesley Business Park, Stokesley N Yorkshire TS9 5JZ United Kingdom



CERT. NO. GB93/1773



Accredited Contractor